

CarDAQ-Plus

Get On The Vehicle Bus using the SAE standard for vehicle communications. The CarDAQ-Plus is fully compliant to J2534-1 and features many J2534-2 extensions. The CarDAQ-Plus is the ultimate tool for communicating with the in-vehicle networks on modern vehicles.



Onboard Linux allows the CarDAQ-Plus to host internal applications. Applications can be deployed using the onboard web and file server or optional Compact Flash Memory.

A MULTI-PURPOSE TOOL

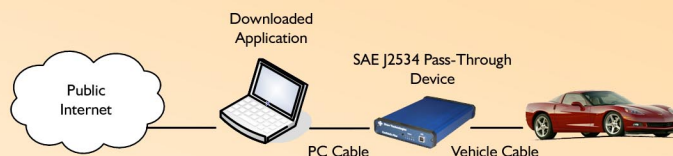
The CarDAQ-Plus is flexible and capable of supporting many different tasks with additional software. Possible uses include:

- ECU Simulator
- Data logger / flight recorder
- ECU reprogramming and calibration
- Dealer service tool
- End-of-line tester
- Fleet and remote monitoring

With the addition of gigabytes of storage, wireless networking, Global Positioning System (GPS) expansion, and six high-speed analog input channels, the possibilities are limitless

SOFTWARE AVAILABLE

Scantool, data analysis, and development software upgrades are available. These packages allow viewing, charting, logging, and playback of diagnostic data in real time. Developer's software is also available for integrating in-vehicle network data into 3rd party applications. More information about these programs is on the back side of this spec sheet.



TECHNICAL FEATURES

- CarDAQ-Plus is capable of reprogramming any J2534 compliant vehicle from any automaker using publicly available software. It also works with special development software at many automakers for in-house engineering
- CarDAQ-Plus features a 200MHz processor and embedded Linux for higher performance.
- CarDAQ-Plus has six configurable analog inputs and expansion capabilities through two onboard CompactFlash slots.
- CarDAQ-Plus can be used to collect data from in-vehicle networks and analog sensors. Collecting data directly from factory-equipped sensors and the ECU is a fast and easy alternative to manually instrumenting test vehicles

BUS PROTOCOLS

- CAN / ISO15765 / GMLAN
- 2nd CAN (Dual or Single-Wire)
- Ford SCP (J1850PWM)
- Class 2 (J1850VPW)
- KWP2000 (ISO9141 / 14230)
- Chrysler SCI (J2610)

PC CONNECTIVITY

- Plug and Play USB 2.0
- RJ-45 wired Ethernet
- 802.11b wireless (optional)
- Shared networking capable

SPECS

- Operating Voltage 0-26v
- Size 1.25"H x 7.5"D x 5.25"W
- Onboard Linux
- Operating Temp 0-70 C

OTHER

- 6 Analog Inputs
- Programming Voltages on J1962 pins
- 2 Compact Flash expansion slots

CarDAQ-Plus Diagnostics Applications



Drew Tech has worked in-house and with 3rd party developers to offer a wide range of software solutions for different jobs.

The CarDAQ-Plus and all other Drew Tech J2534 tools are compatible with these PC applications. To find out more information, visit our website at www.drewtech.com or call (810) 231-3171.

EDGE ANALYSIS

Edge software requires very little setup and includes real-time displays, analysis graphs with overlays and instant reports. With Edge software, you do not need to export your data to Excel or Word.

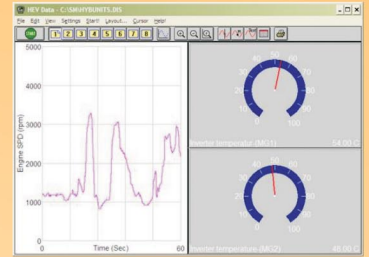
- Log in-vehicle network and OBD2 data fast
- Real time analysis
- Graphical analysis
- Instant reports



DAWN

Dawn is an integrated solution that includes data acquisition, analysis, display, storage, and retrieval. Dawn will allow you to simultaneously acquire data from in-vehicle networks and sensors.

- Heavy duty truck support
- Integrated solution for development and engineering
- Training available



PCMSCAN

PCMScan offers OBD2 diagnostics, generic scan tool features, and real-time acquisition with configurable gauges, graphs, and reports.

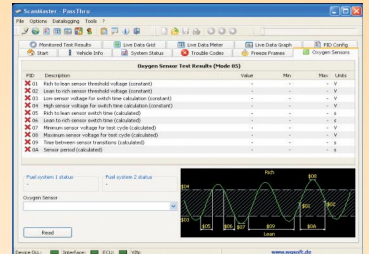
- Configurable virtual dashboard
- Data logging, playback and recording
- Trouble codes and monitor tests



SCAN MASTER

Scan Master is a diagnostics and generic scan tool application for all OBD2 vehicles with a focus on European models.

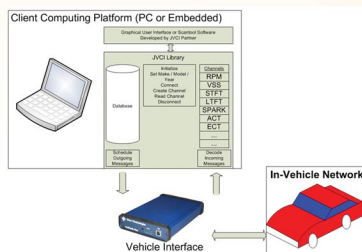
- Diagnostics modes 1-7
- Live data grid, meter, and graph
- Configurable customer reports



JVCI

JVCI is a licensable API and Library designed to help 3rd party developers easily get both generic and enhanced data without needing to know how to communicate with the ECU or identify parameters.

- Enhanced data library
- Simplified programmer's API
- Easy integration into existing applications



DIAGRA

DiagRA MCD combines measurement, calibration, and diagnostics in an integrated package. Supports CCP, MCD-2, ODX, CANdb, MDF, and DCM standards. Includes advanced developer functionalities.

- Mobile and easy to use
- Simple license model with low entrance
- Flash programming support

